

LED Module Installation Instruction

1. Power Specifications

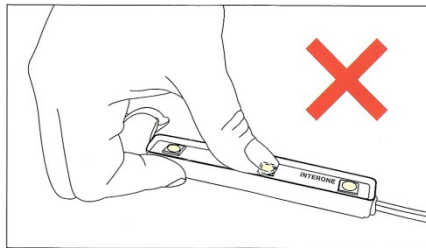
	2 Led	3 Led	3 Led	4 Led	1 Led (high power)
Power Consumption	0.48W	0.72W	1.20W	1.44W	1.5W
Current	0.04A	0.06A	0.10A	0.12A	0.15A
Voltage	12V	12V	12V	12V	12V
Max. Parallel Connection	100 Ea	50 Ea	50 Ea	50 Ea	40 Ea

2. Module Installation

A. Clean surface of the installation area

B. Drill a hole for power wire

C. Peel and stick modules. Standard module distance is about 2.75 ~ 3" for 1st floor sign and this distance can be increased as sign goes up in higher location.



****Warning. Never apply pressure directly on LED light section**

D. Pull out power wire through the hole and seal it.

E. Apply small amount of silicon at the bottom or top of each module to secure them.

F. Connect to power supply.

3. Max. Module Connection per Power Supply with 20% reserved power as minimum.

Module	Power Supply 60W	Power Supply 100W	Power Supply 120W	Power Supply 150W
0.24W	200 ea	333 ea	400 ea	500 ea
0.48W	100 ea	167 ea	200 ea	250 ea
0.72W	67 ea	111 ea	133 ea	167 ea
1.20W	40 ea	67 ea	80 ea	100 ea
1.44W	33 ea	56 ea	67 ea	83 ea
1.50W	32 ea	53 ea	64 ea	80 ea

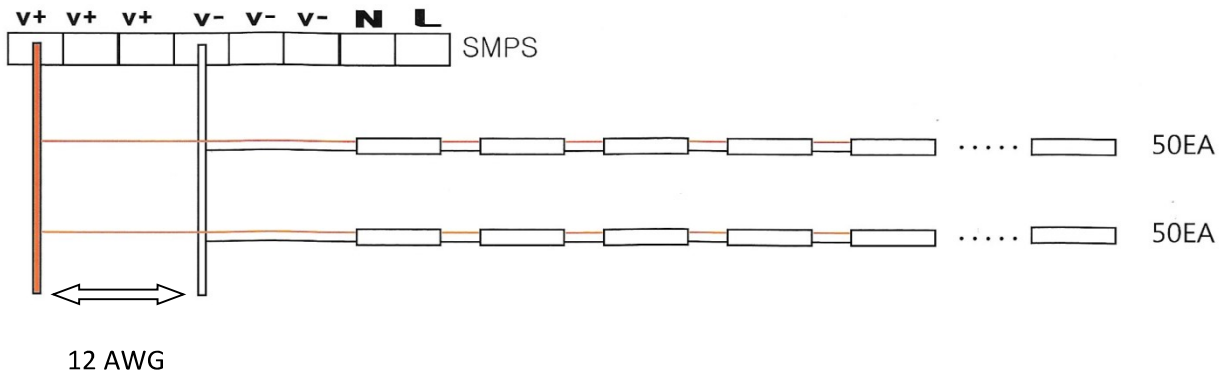
4. Power wiring

Parallel connection with maximum 50 modules per string is recommended.

Always use standard copper wire with increased gauge as the distance extends to minimize voltage drop.

- 1 - 12 feet: 16 AWG
- 13 - 20 feet: 14 AWG
- 21 - 30 feet: 12 AWG

A. For a single power wire from power supply use 12 AWG cable.



B. For multiple Power wire from power supply use 14 AWG cable

